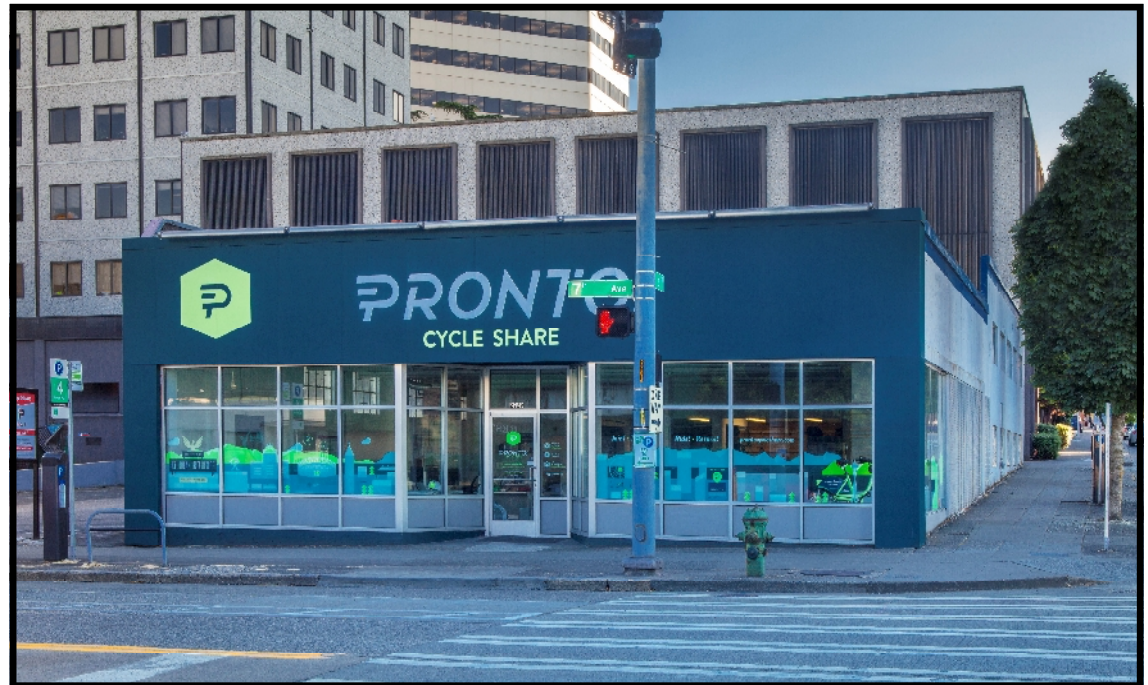


2229 SEVENTH AVENUE

SEATTLE, WA 98109

THE BUILDING:

Located in the heart of the Denny Regrade neighborhood and across the street from Amazon's new world headquarters, 2229 Seventh Avenue was built in 1940 as a stand-alone retail space. The building provides 7,618 square feet of high visibility retail space with 12 foot high ceilings, a mezzanine, at grade loading and twelve off-street reserved parking stalls for clients, customers, visitors and employees.



FOR LEASING INFORMATION:

ED LUERA

eluera@cliseproperties.com

(206) 623-7500

CLISE PROPERTIES, INC.



1700 SEVENTH AVENUE, SUITE 1800
SEATTLE, WA 98101

WWW.CLISEPROPERTIES.COM